



PRE-CAST PRODUCTION
PRE-CAST CONCRETE PILE



DATA SHEET

WIDE RANGE OF SIZES

QUALITY PRECAST PILES & CONCRETE SHEET PILES

OTHER SPECIFICATION

RDA STANDARD

CEB STANDARD





PRE-CAST PRODUCTION

PRE-CAST CONCRETE PILE & SHEET PILE DATA SHEET

01. INTRODUCTION

International Construction Consortium (Pvt)Ltd is leading of manufacturer of pre cast concrete piles, sheet piles and associated precast products in Sri Lanka. They are available in a wide range of dimensions and deferent standard specifications.

The precast piles and precast sheet piles are manufactured with high quality controlling and quality assurance systems and under engineer supervisions.

This publication provides the information necessary to specify pre cast piles for all of these applications.



02. GENERAL SPECIFICATIONS

STANDARD SPECIFICATION

RDA Standard
CEB Standard
Project Standard

PRODUCTION SPECIFICATION

Dimensions: Refer the table
Concrete Strength(N/mm²): Grade 45
Grade 25
Pile Section : Square tyape

RAW MATERIAL SPECIFICATION

Cement: SLS 107 : 2015
: BS EN 197 - 1:2011
Fine Aggregate: BS 882 - 1992
Coarse Aggregate: BS 882 - 1992
Reinforcement Steel : SLS 375 : 2009
Water : BS 3148 - 1980

03. PRODUCT RANGE

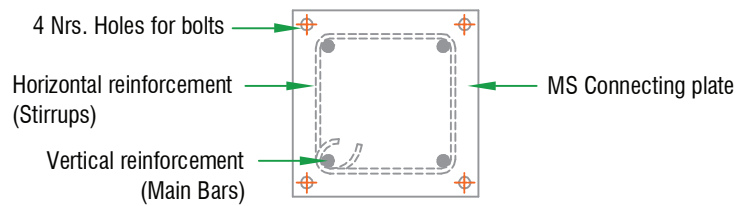
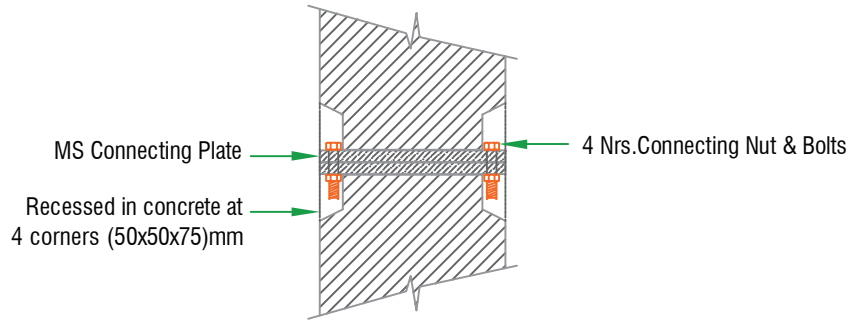
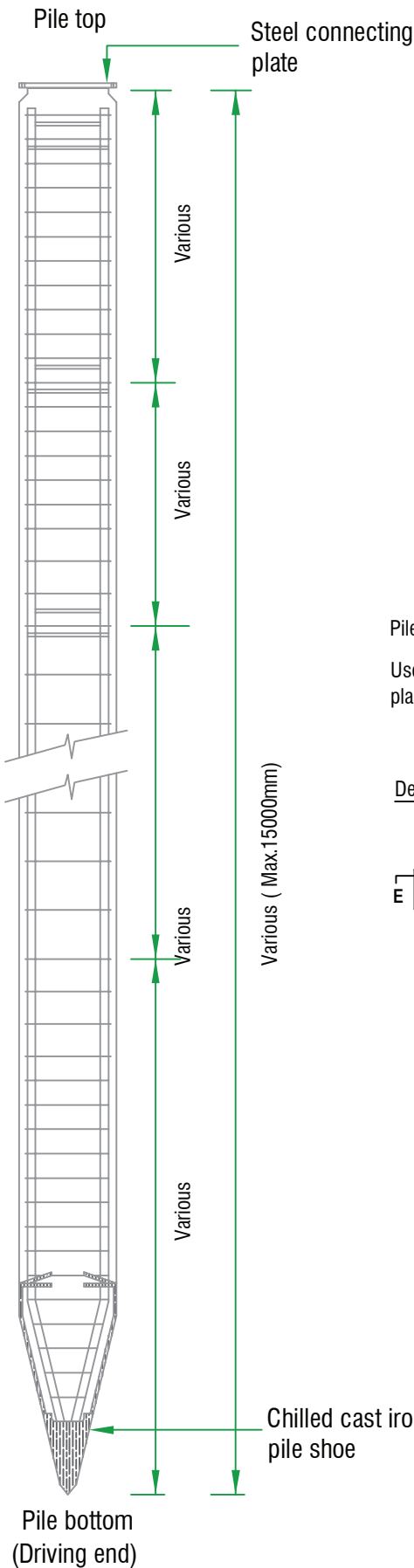
PRECAST CONCRETE PILE				
LENGTH (MM)	WIDE (MM)	HEIGHT-MAX. (MM)	TYPE OF PRODUCT	RDA DRAWING NO.
355	355	15000	-	T/B/108
400	400	10000	-	Customer Requirement
300	300	10000	-	
PRECAST CONCRETE SHEET PILE				
300	250	6000	A	T/B/510
300	250	9000	B	T/B/514



PRE-CAST PRODUCTION

PRE-CAST CONCRETE PILE & SHEET PILE DATA SHEET

PRECAST CONCRETE PILE

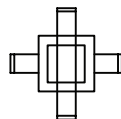
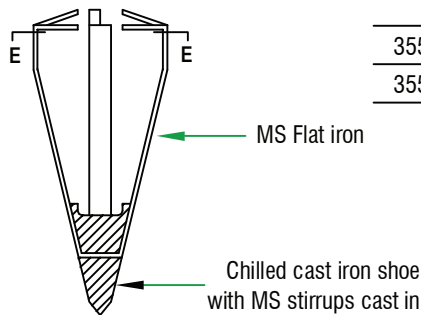


Connecting Type of pile

Pile dimension are various by the pile section. And pile section will change by the customer requirement.

Use always the two lifting point for stacking and handling, and L@.03m lifting hole use should be only placing or erecting.

Details of pile shoe



Section EE

Shoe dimension are will be change by the pile size.

Longitudinal Reinforcement

Size of pile (mm)	Length (mm)	Main Reinforcement	
		Diameter (mm)	Quantity (nrs.)
355x355	Up to 10500	20	4
355x355	10500 to 18000	25	4

Chilled cast iron/steel pile shoe

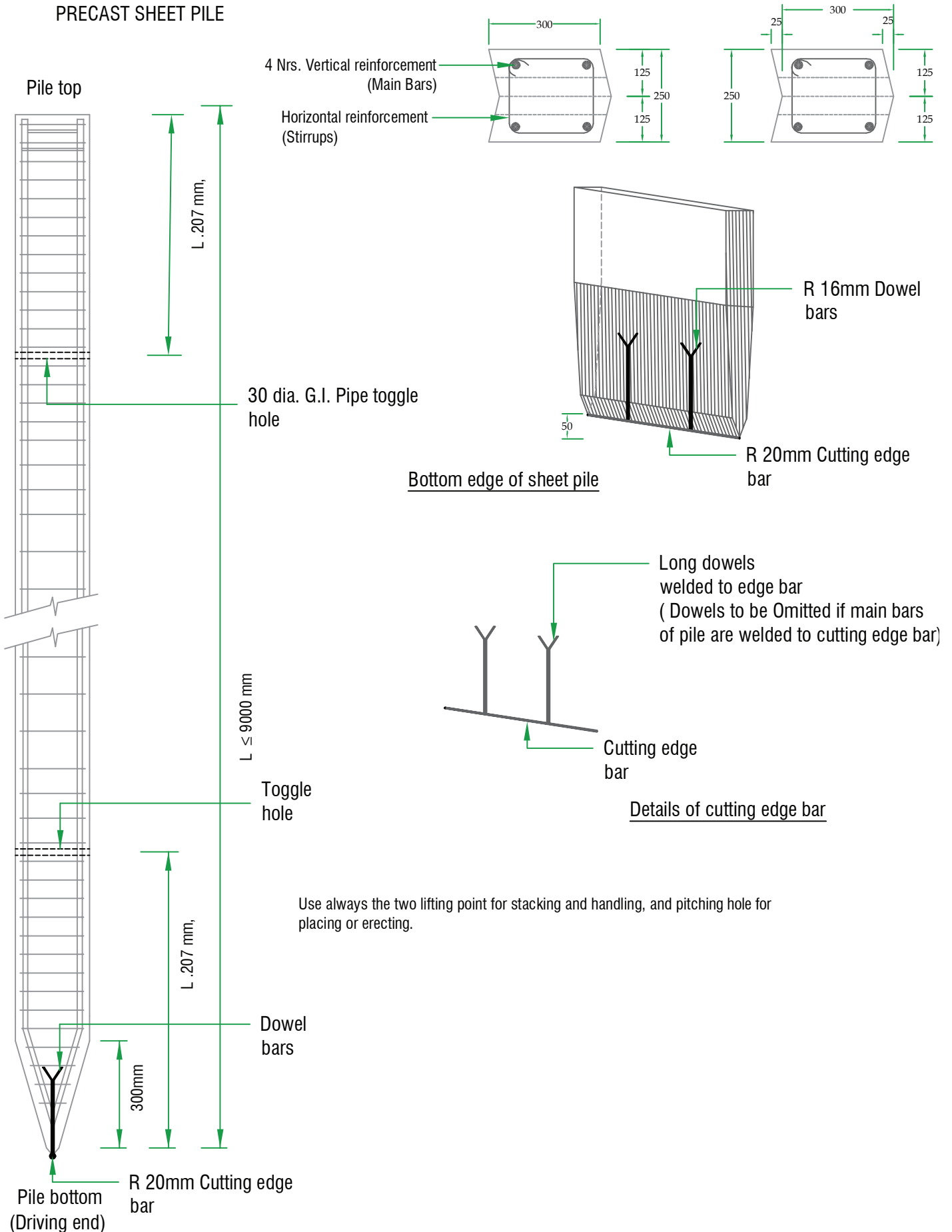
Pile bottom (Driving end)



PRE-CAST PRODUCTION

PRE-CAST CONCRETE PILE & SHEET PILE DATA SHEET

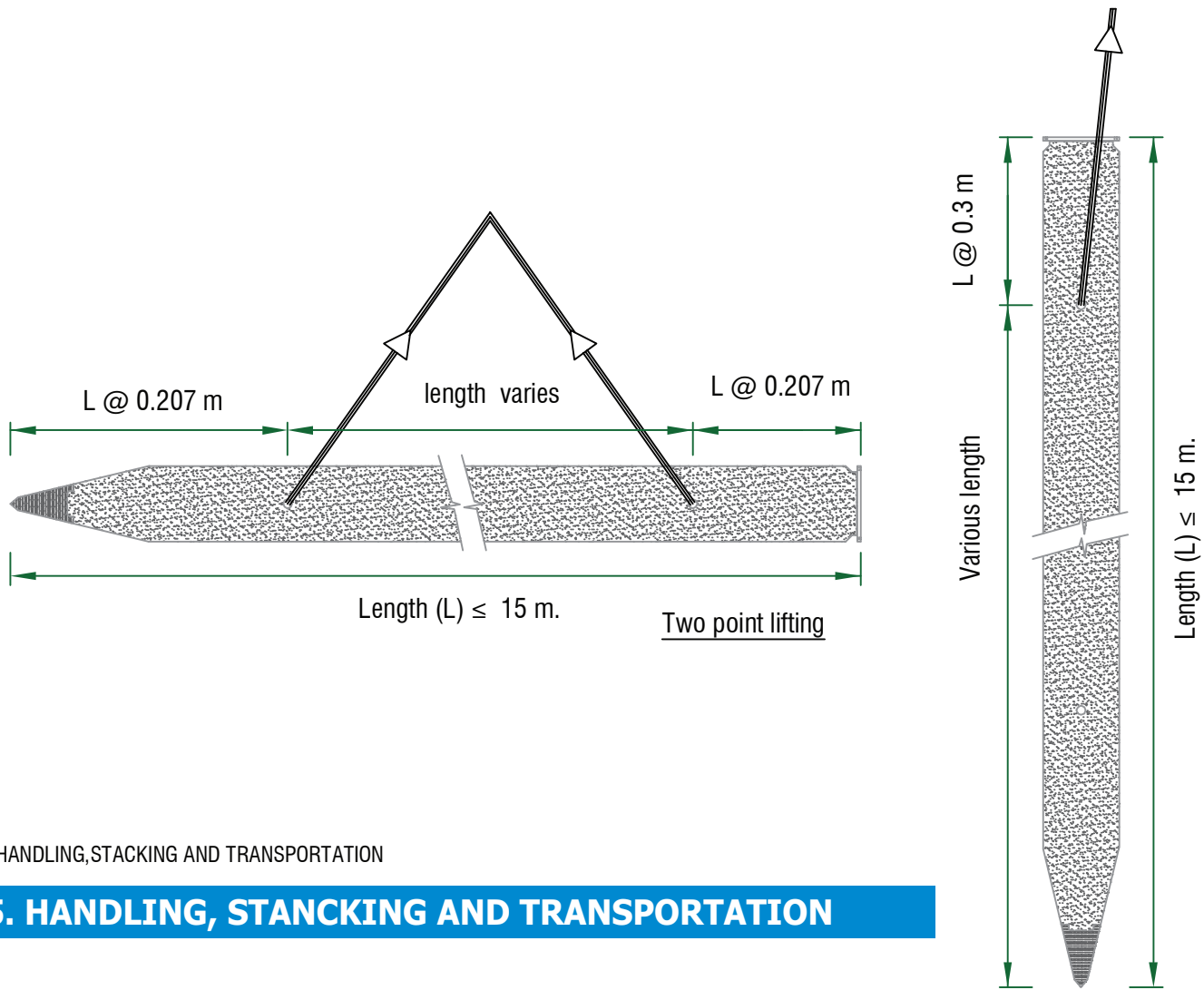
PRECAST SHEET PILE





PRE-CAST PRODUCTION

PRE-CAST CONCRETE PILE & SHEET PILE DATA SHEET



05. HANDLING, STACKING AND TRANSPORTATION

05. HANDLING, STANCKING AND TRANSPORTATION

(Precast pile and Sheet pile)

Handling, stacking and transportation method are same as for precast pile and precast sheet pile.

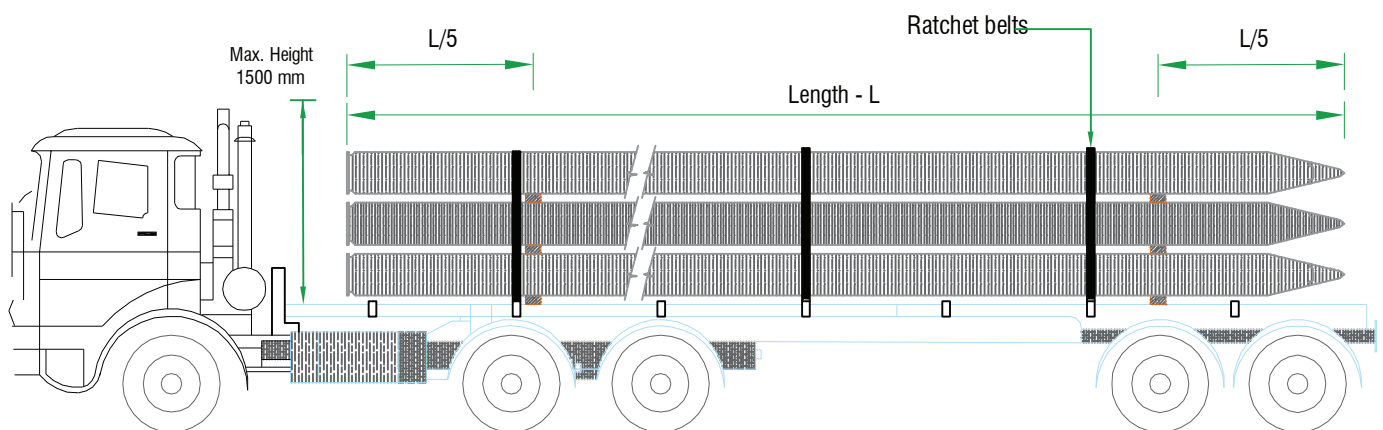


Fig.01 - Correct loading method for transportation.



PRE-CAST PRODUCTION

PRE-CAST CONCRETE PILE & SHEET PILE DATA SHEET

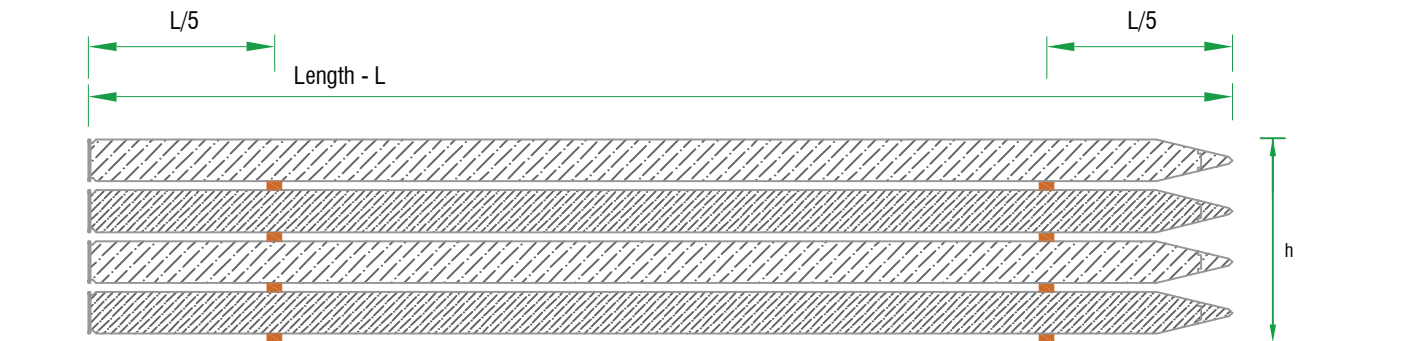
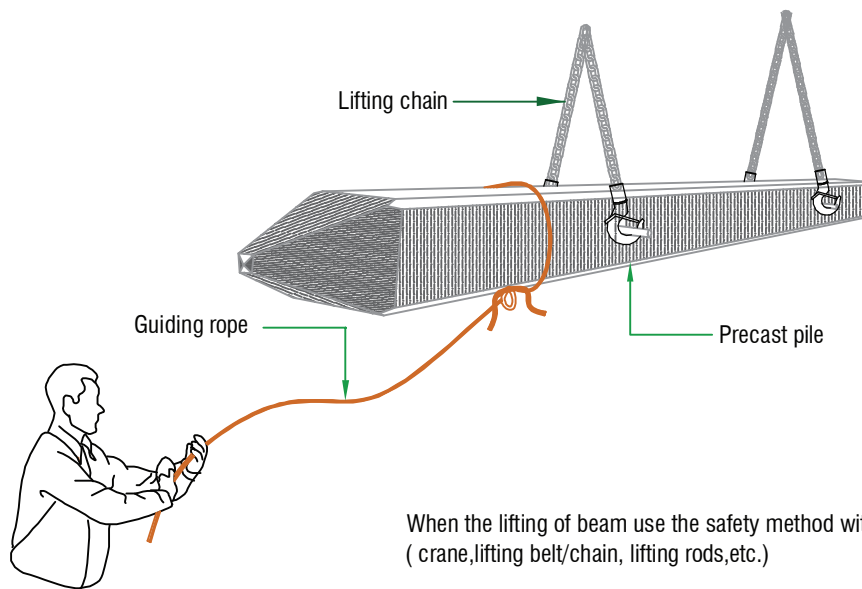


Fig.02 - Correct method for stacking.

Always put the support in vertical axis



When the lifting of beam use the safety method with suitable equipment.
(crane, lifting belt/chain, lifting rods, etc.)

Always use the designated holes for the handling of pile and any jerk should be avoid the during lifting and handling.

Do not standing any workers & officers under the pile during the lifting or handling.
always use the guiding rope for handling the product.

06. TESTING & INSPECTION

Material test report and mill report
Concrete crushing strength. (test cube strength)
Imposed load test record.

International Construction Consortium (Pvt) Ltd

Precast Yard, # 508/2, Off Madapatha Road, Piliyandala, Sri Lanka.

Tel: +94 11 261 9160-4 Fax: +94 11 261 9164

Email: precast@icc-construct.com Web : www.icc-construct.com

