

ICC-ACOTEC

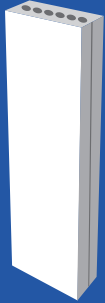
Precast Wall Panels

Saves Material, Labour & Time



NO PLASTERING
REQUIRED





ICC-ACOTEC
Precast Wall Panels

ICC PRECAST

The Forefront of Construction Innovation

International Construction Consortium (Pvt) Ltd, has been recognized by the Sri Lankan construction industry as an innovative precast solution provider, one that enables fast & economical construction. With focus on quality, we obtained the best equipment and latest technology from the industry leaders to assure a quality product portfolio at the highest standards.

We continue our efforts in introducing value added solutions to the construction industry towards an emerging Sri Lanka



Founded 1959	Customers Over 100 countries	Representatives Over 20 countries	Innovations Over 450 patents
------------------------	--	---	--

Elematic Acotec Plant at ICC Precast Yard, Madapatha, Piliyandala

Elematic is the market leader in precast concrete technology for medium and high-rise buildings.



ICC-ACOTEC

Precast Wall Panels

Since their introduction in the late 1980's, ACOTEC walls have proven themselves in more than 15 countries including Germany, United Kingdom, Finland, Ireland, Spain, Japan, Singapore, Malaysia, China & India under various brands.

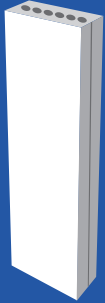
ICC-ACOTEC precast wall panels are made out of concrete comprising cement, sand & aggregate (G40)

Its main application is the partitioning of residential, commercial, institute & office buildings replacing traditional materials used in partitions and facades such as brick & cellular blocks.

5 x Faster than Traditional Brick-Wall

5 x Faster than Cement Cellular-Block-Wall

3 x Fast as CLC or AAC Block-Wall

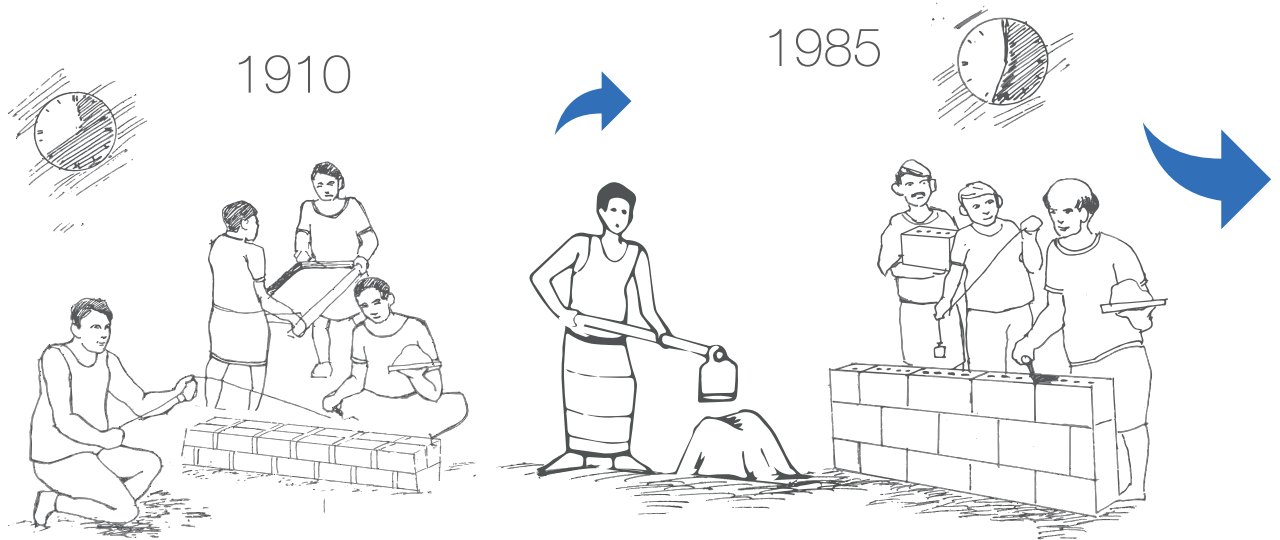


ICC-ACOTEC
Precast Wall Panels

BRICK TO BLOCK - BLOCK TO PANEL

Leaps in Efficiency

Traditional on-site construction methods meet with efficiency problems especially in societies where labour costs are high and the demand for fast construction projects continuously grow.



Buildability*
of conventional brick



Buildability*
of cellular blocks



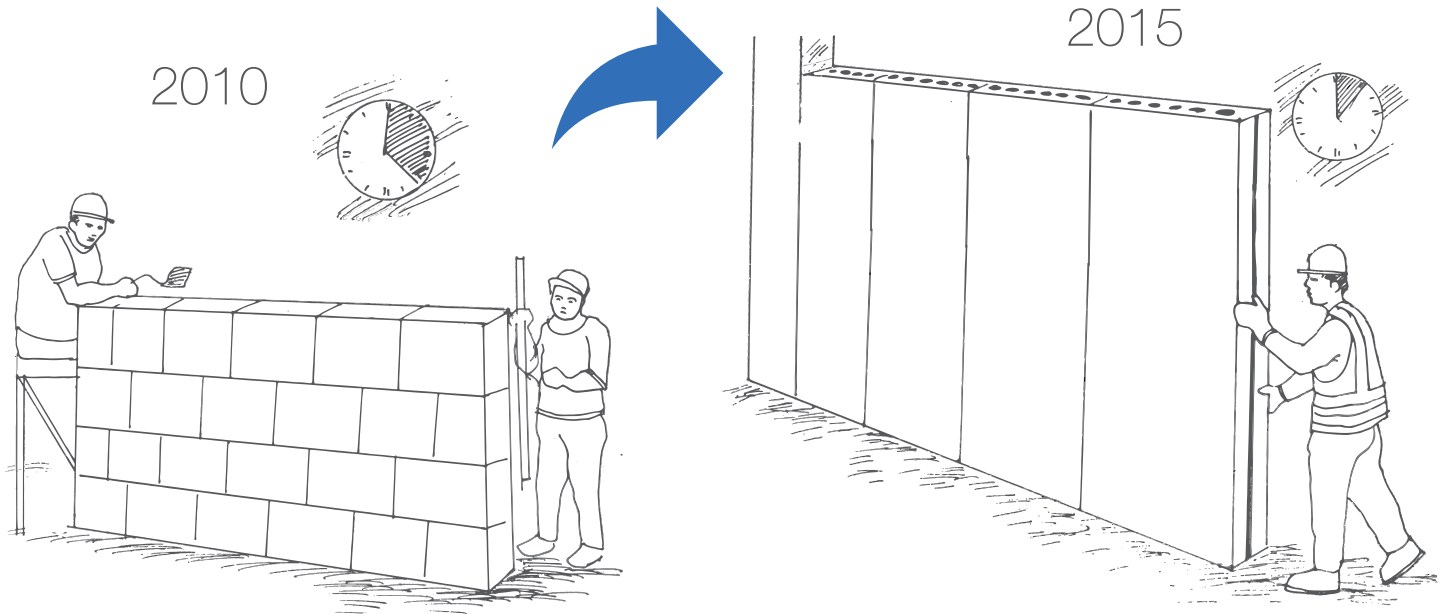
Physical Properties of ICC-ACOTEC Panels

	ICC-ACOTEC 75 mm	ICC-ACOTEC 100 mm	ICC-ACOTEC 140 mm
Weight	110 kg/m ²	135 kg/m ²	175 kg/m ²
Panel Bulk Density	1200 kg/m ³	1350 kg/m ³	1250 kg/m ³
Fire Resistance	120 mins	>130 mins	>130 mins
Sound Insulation	41 dB	43 dB	> 43 dB
Thermal Resistance		0,17 m ² K /W	> 0,17 m ² K /W
Panel Strength	>5 N/mm ²	>5 N/mm ²	>5 N/mm ²
Flexural Strength	1,08 N/mm ² (100 mm)		
Loading Test	299,7 KN (100 mm thick panel with 2700 mm height)		

* According to International test references

ICC-ACOTEC Precast wall panels with thicknesses of **75mm, 100mm & 140mm** available in heights ranges from **2100mm - 3300mm**

ICC-ACOTEC precast wall panels result in superior quality, faster construction & reduced labour, with an erecting speed of up to 5 m² per man day.



4/10
Buildability*
 of lightweight block



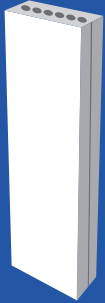
9/10
Buildability*
 of ICC-ACOTEC Precast Wall Panels



Comparison of Physical Properties ICC-ACOTEC vs Conventional Wall Materials

		Conventional Brick Wall	Cellular Block Wall	AAC / CLC Block Wall	ICC-ACOTEC Wall
Fire Rating (hrs)		1 - 2	1 - 2	2	1.5 - 2.5
Sound Insulation		35 dB	38 dB	42 dB	43 dB
Compressive Strength (N/mm ²)		2.5	3	5	5 - 6
Thermal Conductivity (W/mK)		0.13	0.88	0.18	0.56
Thermal Resistance (m ² k/W)		0.8	-	0.75	0.18
Moisture Absorption (%)		30	10	15	8

* According to International test references



ICC-ACOTEC
Precast Wall Panels

PROFITABILITY AT IT'S PINNACLE

With ICC-ACOTEC Solutions

- | | | | |
|----|---|--|---|
| 1 | Higher productivity | | 80% Saving on Labour
5 m ² per labour day
(compared to 1m ² per labour day with conventional blocks) |
| + | | | |
| 2 | Reduced use of machinery | | 60% Less Weight
Eliminates lifting of plaster materials (sand & cement) |
| + | | | |
| 3 | No stiffener and lintel required | | 20% Savings
Save on reinforcement, concrete, formwork, labour & time |
| + | | | |
| 4 | Faster installation & finishing | | 5x Faster
5x faster than block work and
3x faster than AAC / CLC blocks |
| + | | | |
| 5 | Eliminates plaster on both sides | | Zero Cost of Plastering
No 15mm thick plastering required
Only a 3 - 5mm skim coat |
| + | | | |
| 6 | Full height constructability | | Build at Once
Continuous construction upto 3.3m height without horizontal stiffener
(compared to 1.2m height restriction with conventional blocks) |
| + | | | |
| 7 | Panels with larger dimensions
(600mm x 3000mm) | | Larger Coverage Capacity
1 panel is equivalent to 23 Cellular blocks
1 panel is equivalent to 15 AAC blocks |
| + | | | |
| 8 | Precise | | Factory Finished Product
Saves on correcting imperfections due to high standards
& consistency |
| + | | | |
| 9 | Ease of laying service lines | | Eliminates Vertical Cutting
Vertical hollow-cores can be used for plumbing & electrical |
| + | | | |
| 10 | Peace of mind | | Cleaner Job Site
Less wastage & minimal wet work |

= SAVES

Material → Improved Margins
 Labour → Reduced Overheads
 Time → Faster Completion

REVOLUTIONIZE TO A BETTER BUILDABILITY*

By Deploying ICC-ACOTEC Wall Panels

Being a factory finished product it has high accuracy which means less material & labour cost involved for final finishes which carries better quality standards.



	Conventional Brick Wall (with plaster)	Cellular Block Wall (with plaster)	AAC / CLC Block Wall (with plaster)	ICC-ACOTEC wall
Installation Speed (m ² /man day)	0.9	1	2	5
Workmanship for 100 m ² (man days)	110	95	55	20
Units per 100 m ² wall area	6000	1250	800	55
Mortar used (m ³ /m ² of wall panel)	4.0	3.0	2.0	0.5
Plastering on each side (mm)	15	15	10	0
Weight per m ² (kg)	285	220	90	135

* Calculation for 100 mm wall

**BUILDABILITY is the extent to which the design and the adoption of construction techniques & processes affects the productivity level of building works*

ACOTEC PRECAST WALL PANELS

Used Commercially Worldwide

Europe, Middle-East & Asia



Europe & Middle-East

Germany
United Kingdom
Spain
Ireland
Portugal
Saudi Arabia

Asia

Sri Lanka
Japan
Singapore
South Korea
China
India
Indonesia
Philippines
Taiwan
Thailand

Website - www.elematic.com



International Construction Consortium Pvt Ltd

Address #57, S. De. S. Jayasinghe Mawatha, Kohuwala, Nugegoda, Sri Lanka
Telephone +94 114 645 454 / Fax +94-114 645 422
Website www.icc-construct.com

